

## ACOUSTIC BARRIER

An effective temporary barrier sound solution designed to help protect local communities and employees from the harmful effects of excessive noise on site.

Specifications	
Size:	Single blanket:1335mm [L] x 2050mm [H] (3 blankets needed to fit on 1 fence panel) Full blanket: 3650mm [L] x 2050mm [H]
Weight:	5.3Kg / 13Kg
Max Noise Reduction:	Single blanket: 43dB reduction and 100% absorption Full blanket: 37dB reduction and 89% absorption
Material:	Recycled Biodegradable Acoustic Infill, which is 100% recyclable.
Features:	<ul style="list-style-type: none"> <li>Multi-award winning and endorsed by Crossrail and Transport for London</li> <li>Water, fire, temperature and UV resistant</li> <li>Reduced carbon footprint</li> <li>Reflective strips for visibility at night</li> <li>Easy clean/wipe</li> </ul>
Preventative:	Reduces noise pollution from sites and creates healthier workspaces/environments
Preparation:	Minimal – Designed to be easily installed, ensure that suitable stabilisation is used
Storage:	Can be palletised



- ☐ Rail Maintenance
 ☐ Construction
- ☐ Pedestrian Walkways
 ☐ Utility Projects


 Waterproof


 5.3/13Kg


 Noise Reduction

### Purpose

- ✓ Protects the workforce and public from harmful and excessive noise
- ✓ Enables maximum noise absorption 43dB

### Additional Products

This barrier can be used in conjunction with our [Anti-Climb Mesh Fence Panel](#) or [Elite SlotBlock Barrier](#).

### Contact Us


 elite-gss.com


 sales@elite-gss.com

### Delivery

We hold most stock, so whether you require same/next day or standard delivery, here are the options to receive products.



Same day\*



Next day\*



Standard 3 days

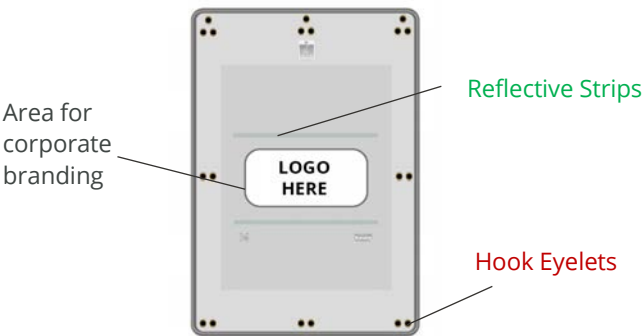
Typical enquiries handled within 1 hour from receiving your call.

\* Depending on stock availability when placing order

■ Branding

■ Surface

■ Connection



# Installation Guide

## Step 1 - Preparation

To minimise the risk of theft or damage through graffiti, the panels should be installed on the inner site of any structure to which the public might have direct access.

Please consider the environmental/working conditions to which the Acoustic Barriers will be exposed, and that suitable stabilisation is used.

\*Cable ties, fence panels or a supporting structure is required for the installation of the Acoustic Barriers.



## Step 2- Assembly

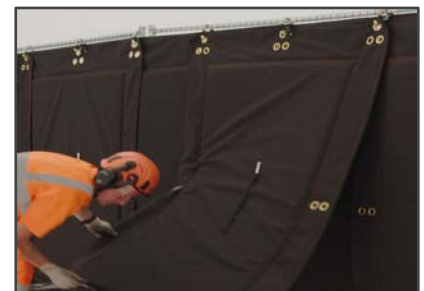
Carry the Acoustic Barrier Panels to the desired area. Please ensure that when installing the front of the panel it must face the noise receiver and the back (a mesh surface) must face the noise source. Orientation instructions should be printed onto the panels.

## Step 3 - Installation

Place the hooks provided onto your fence panel/supporting structure and slot the Acoustic Barrier Panel onto the hooks through the eyelets at the top of the system.

Fix the next Acoustic Barrier Panel in the same method, the borders of the panels should overlap.

To secure each panel further to the fixing structure, a cable tie can be inserted into the centre eyelet at the back of the panel and the middle section of the fence. Repeat until your desired number of panels are achieved.



## Step 4 - Additional Noise Reduction

Where additional noise reduction is required, the panels can be double layered to provide higher acoustic performance. Stagger the second layer of panels over the existing layer ensuring that they overlap neatly. Secure the sides of the new panels from the centre eyelets of the original barriers.

## Need to Natter?

0800 622 6838

elite-gss.com

News, insights and events

Product reviews and offers, answered questions and discussion tips

Shared business and industry information

'How to' use our products, installations and vlogs



## Installation timings



1 person required



Single panel connection in 5 mins



200m linear in approx. 2.5 hours (depending on ground conditions and site layout)



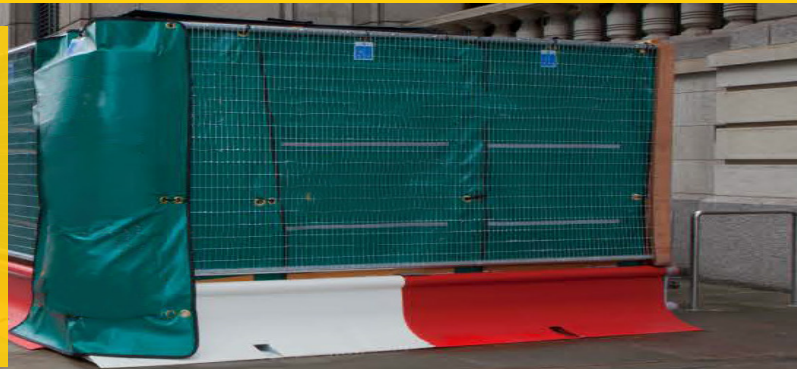
## Eco-friendly and long lasting

Made from Recycled Biodegradable Acoustic Infill, which is also 100% recyclable.

## Acoustic Barrier

An easy and cost effective system for noise attenuation, delivering outstanding results.

The Acoustic Barriers are water, fire and temperature resistant.



## Additional Information

Our Acoustic Barrier is designed to help protect local communities and employees from the harmful effects of excessive noise during construction and events.

It has the option for corporate branding and a community care message which can be arranged at an additional cost and with a minimum order quantity – contact us with your enquiry.

This product is available in standard green but other colours are available subject to minimum order quantities.

This system is easy to clean, maintain and fast to install through it's easy hook and eyelet connection and no specialist lifting equipment is required.



[CLICK HERE TO PLAY VIDEO](#)

## Handling and Storage

Acoustic Barriers are delivered to site in pre-wrapped packs and banded with polyester strips. Pallets are incorporated into the packaging to aid the use of mechanical handling with apparatus such as fork-lifts and lifting booms with slings.

The Acoustic Barriers should be stored in original packaging on a flat, solid and free draining storage area and we recommend the banding should not be removed when storing them, unless when safely positioned at ground level or until ready for use.

Gloves, safety footwear, high-visibility clothing and eye protection should be worn when handling the Acoustic Barriers.

Most Acoustic Barriers can be rolled and secured for easy transportation and storage. Simply lay the barrier face up, take the bottom edge and begin to roll. Clip shut with the integrated strapping clip once fully rolled. Adjust tightness of the straps, as necessary.

## Need to Natter?

☎ 0800 622 6838

🌐 elite-gss.com

📘 News, insights and events

🐦 Product reviews and offers, answered questions and discussion tips

📘 Shared business and industry information

📺 'How to' use our products, installations and vlogs



Always address the safety warnings on the barrier and ensure that the structure upon which the barriers are mounted can handle the extra loading. Be aware that surfaces can become hot through exposure to the sun.

In windy conditions, ensure that wind levels are consistently monitored. Additional bracing may be required. In very high wind conditions it may be necessary to remove the Acoustic Barrier Panels from the structure completely.

Elite GSS Ltd accepts no liability whatsoever from any damage, loss or injury arising from the installation, ground conditions and exposure to harmful materials such as hot works/naked flames/corrosive chemicals on which these products are used.

**In order to optimise sound reduction, the barriers should be placed strategically. The closer the barrier is to the noise source, the larger the acoustic shadow and the greater the sound attenuation.**

## Additional information



[Product Guide](#)



[Elite Products Brochure](#)