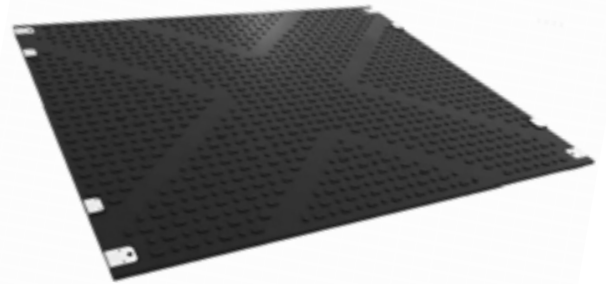


K-MAT HEAVY DUTY ROADWAY PANELS

A temporary and portable Heavy Duty Roadway Panel, designed to provide Temporary Access and Ground Protection for extremely heavy plant and machinery, used in a variety of applications and industries.

Specifications

Size:	3m [L] x 2.5m [W] x 40mm [D] 4m [L] x 2m [W] x 40mm [D]
Weight:	295Kg / 315Kg
Load:	Suggested 100 tonnes, weight tested up to 160 tonnes (depending on ground conditions)
Material:	100% Recycled Ultra High Molecular Weight Polyethylene (UHMWPE) and 100% recyclable
Features:	<ul style="list-style-type: none"> ○ High profile vehicular traction surface and low profile non-slip pedestrian surface ○ 4 Connection holes ○ Ability to support extreme loads ○ Non-conductive and non-absorbent ○ UV protected ○ Hard wearing and durable/extensive lifespan ○ Easy clean/wipe/jet washed
Preventative:	Maximises support and mud suppression with minimal disturbance to protect the ground and grips diminish accidents
Preparation:	Specialist lifting equipment such as Hiab or Heavy Duty Forklift is required
Ecosystem:	Avoids property, heritage and environmental damage, plus reinstatement
Storage:	Steel Fabricated Stillages available - ask for our options
Accessories:	Metal strap connection systems and other options available



Delivery

We hold most stock, so whether you require same/next day or standard delivery, here are the options to receive products.



Same day*



Next day*



Standard 3 days

Typical enquiries handled within 1 hour from receiving your call.

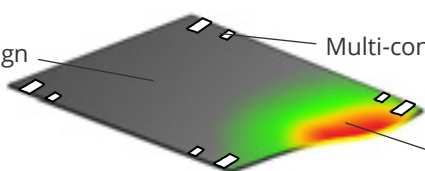
* Depending on stock availability when placing order

■ Rigid tension

■ Flexibility

■ Fits surface

Non-slip design & material



Multi-connection points

Moulds to surface

- Construction
- Military Sites
- Civil Engineering
- Access Routes

 max 100 tonnes



 295Kg



Purpose

- ✓ Temporary Access & Ground Protection
- ✓ Prevent ground damage from weather
- ✓ High profile traction surface for vehicles, underside low profile non-slip surface for pedestrians
- ✓ Avoids vehicles from becoming bogged down, saving valuable time and money

Additional Products

As an alternative option, please take a look at our [Hardwood Timber Bog Mats](#) or [Steel Road Plates](#).

Contact Us

 elite-gss.com

 sales@elite-gss.com

Installation Guide

Step 1 - Preparation

Before the K-Mat Heavy Duty Roadway Panels are installed, it is recommended and where possible that the ground is graded and levelled before use. All large projections and objects must be removed.



Step 2- Assembly

Ideally, a non-woven and needle punched filtration textile should be laid out prior to installation. This will prevent soil contaminating the top surface whilst still allowing water to drain away and will also help to prevent mud and dirt from coming up between the gaps of the mats.



Step 3 - Laying

K-Mat Heavy Duty Roadway Panels should be lifted by specialist equipment such as a Hiab or Heavy Duty Forklift.

Safely move the K-Mat Heavy Duty Roadway Panel into place whilst being guided by another person.



Step 4 - Connecting

Using the Metal Strap connection systems and a simple power drill and the use of M16 bolts this will connect the panels together. Make sure this is tightened and secured before using any plant or machinery on the system.

We recommend using a battery-operated drill to tighten the bolts. We do not advise using air-drills.



Please be sure not to over tighten bolts, as this can cause cross-threading and damage to the connectors.

Need to Natter?

0800 622 6838

elite-gss.com

News, insights and events

Product reviews and offers, answered questions and discussion tips

Shared business and industry information

'How to' use our products, installations and vlogs



Installation timings



Specialist lifting equipment is required



Single line connection in 5 mins



Grid connection in less than 15 mins



300m² area in approx. 2 hours (depending on ground conditions and site layout)



When driving on the mats, do not exceed 5mph

K-Mat Heavy Duty Roadway Panels

These mats have been manufactured from 100% Recycled Ultra High Molecular Weight Polyethylene (UHMWPE) which is also 100% recyclable.

We can apply reflective markings for safety in low visibility or night conditions as an option.



Additional Information

The final installation location of each mat should provide sufficient space for thermal movement. Typically, 10mm is recommended in the UK climate. Once in position, mats may be retained with proprietary fixing pieces.



[CLICK HERE TO PLAY VIDEO](#)

These mats may be used with custom fixings to construct highly durable and weather resistant temporary running surfaces over sensitive ground conditions and will exhibit the following benefits:

- Long life expectancy
- Maintenance free
- Highly resistant to impact and wear
- Non-toxic
- Unsupportive of organic growth
- Non-absorbent
- Will not rot
- Slip resistant
- Easily fixed

Handling and Storage

K-Mat Heavy Duty Roadway Panels are delivered to site in pre-wrapped packs and banded with polyester strips. Pallets are incorporated into the packaging to aid the use of mechanical handling with apparatus such as fork-lifts and lifting booms with slings.

These mats should be stored in original packaging on a flat, solid and free draining storage area and we recommend the banding should not be removed when storing them, unless when safely positioned at ground level or until ready for use.

Gloves should be worn when handling these K-Mat Heavy Duty Roadway Panels.

Need to Natter?

0800 622 6838

elite-gss.com

News, insights and events

Product reviews and offers, answered questions and discussion tips

Shared business and industry information

'How to' use our products, installations and vlogs



When assessing ground conditions on site we advise seeking professional engineering guidance if there is any doubt. It is the users responsibility to assess the load-bearing capacity of the ground, and to only operate vehicles within the weight that the ground is capable of safely supporting. Elite GSS Ltd accepts no liability whatsoever from any damage, loss or injury arising from the installation and ground conditions on which these products are used.

We advise not to use Steel Tracked vehicles with any composite mats unless pre-authorized and agreed beforehand, traversing and aggressive movement on the mats may cause damage to them and the connectors and this will be the sole responsibility of the customer and user of the mats.

Additional information



[Product Guide](#)



[Elite Products Brochure](#)

